

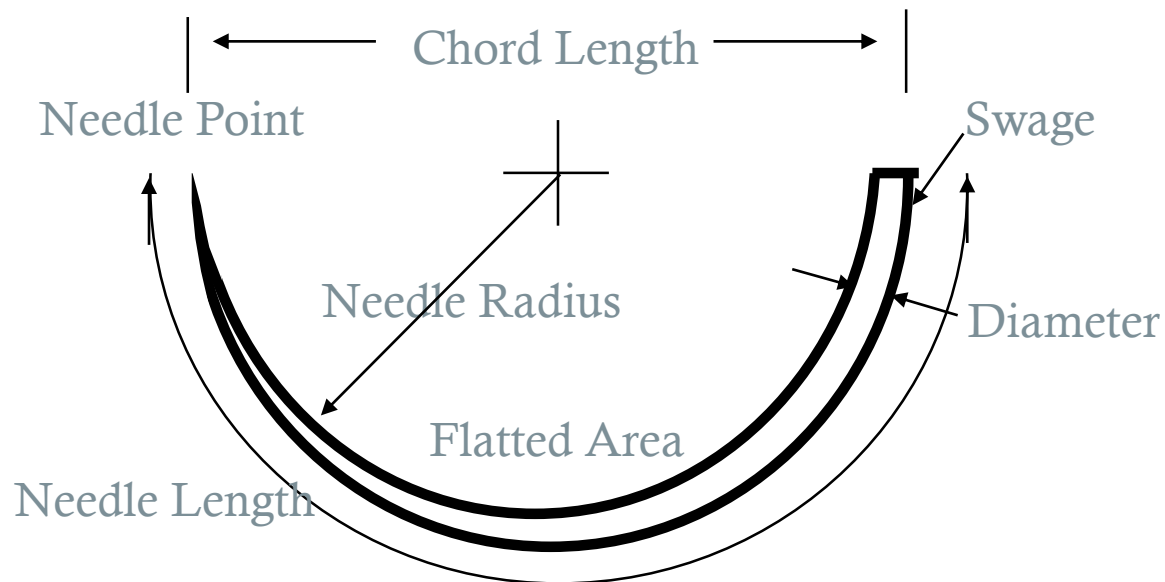
SURGICAL NEEDLES

Prepared by: Mana Basirat

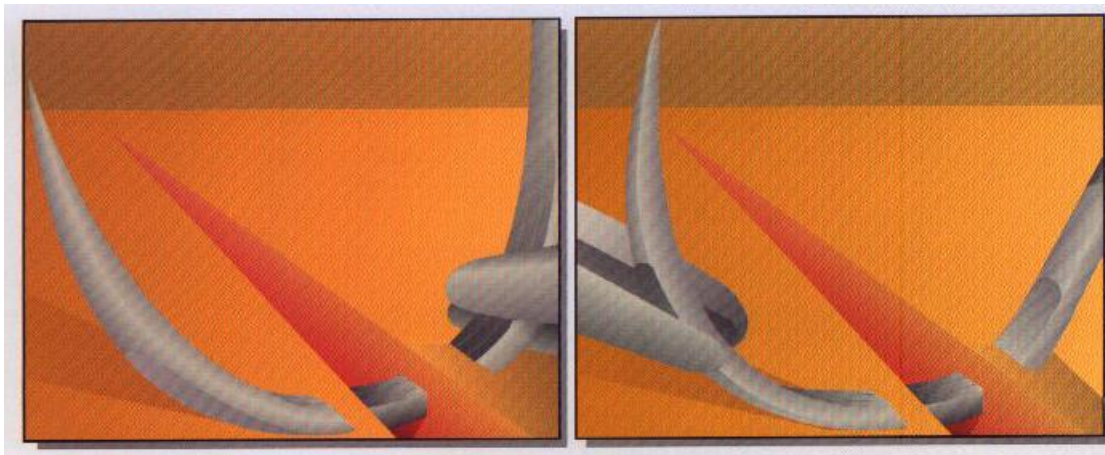
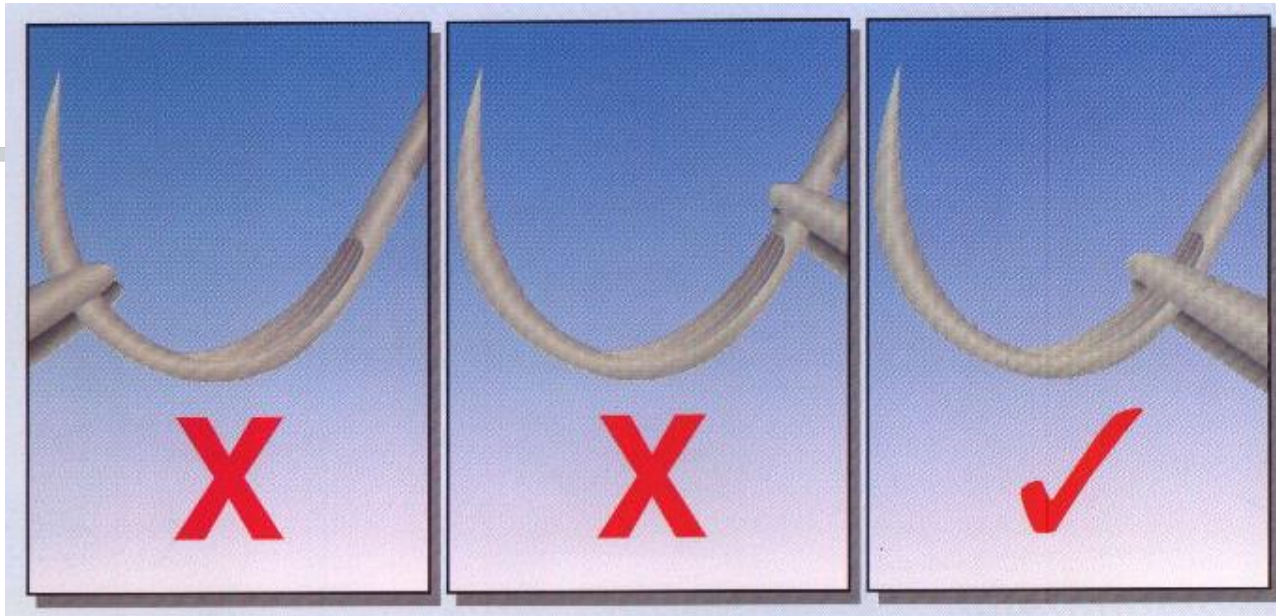


ANATOMY OF A SURGICAL NEEDLE

EYELESS NEEDLE



USE OF NEEDLE



NEEDLE SHAPES

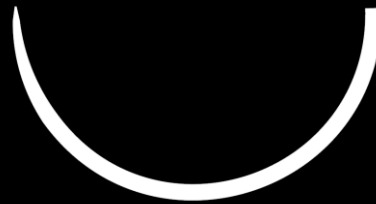
$1/4$ Circle



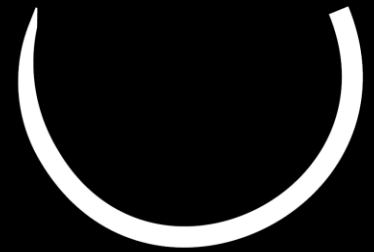
$3/8$ Circle



$1/2$ Circle



$5/8$ Circle



$1/2$ Curved



Compound
Curve

J Shape



Straight



NEEDLE TYPES


- **Round Bodied**
- **Cutting**
- **Ophthalmic**

TAPERPOINT

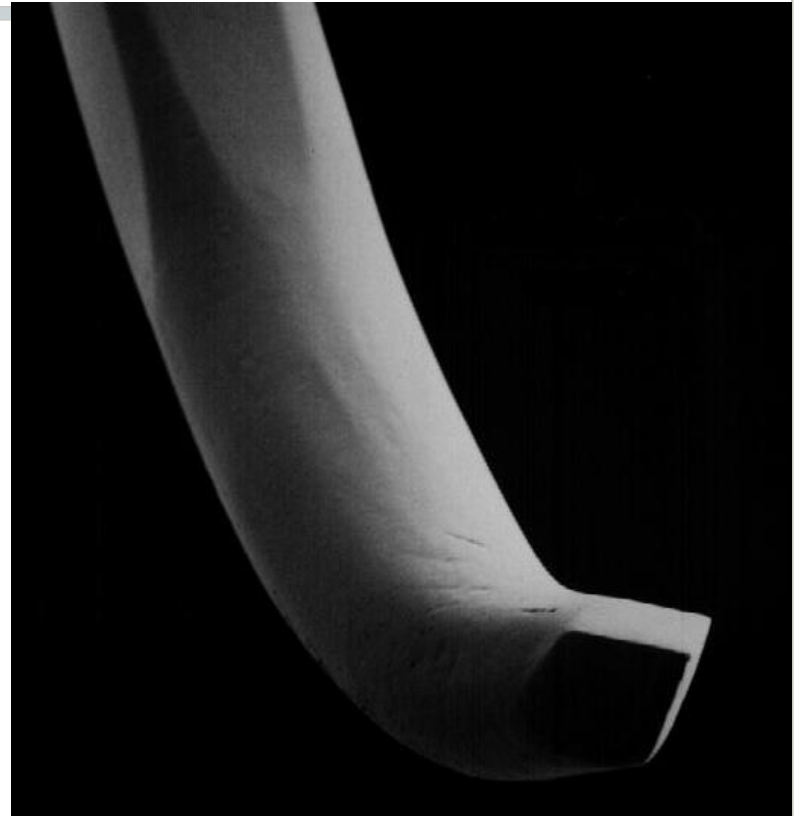
- **Tapering point**
- **Separates tissue**
- **Does not cut**



TAPERCUT

TAPERCUT 

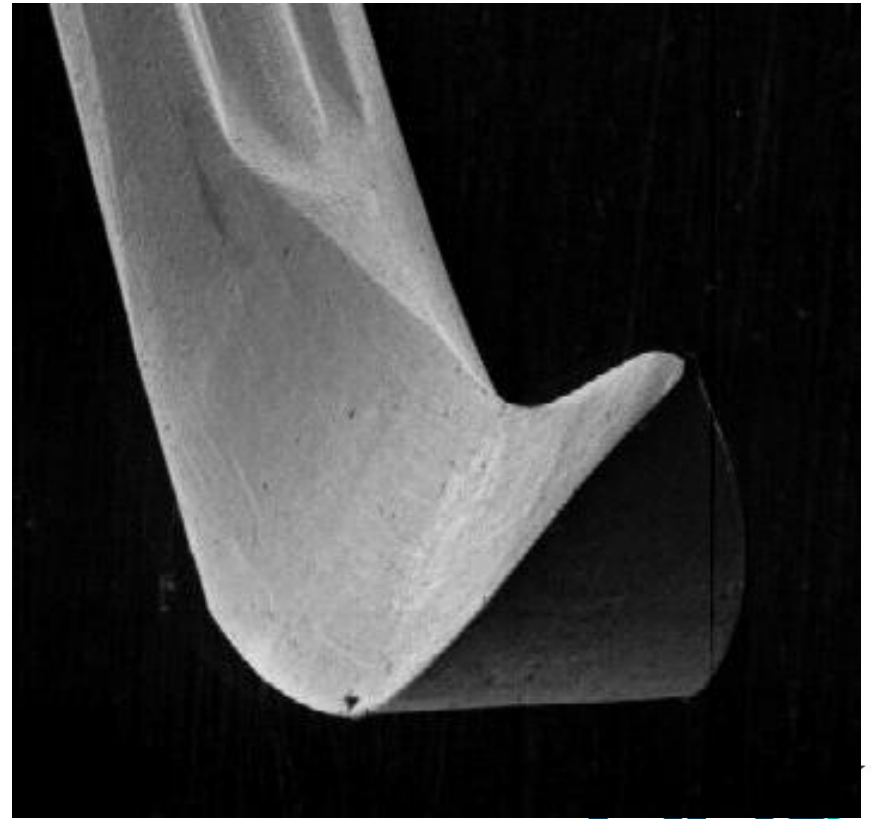
Cutting tip confined to point only
Tapers to round body
Improved penetration



CUTTING NEEDLES

CONVENTIONAL CUTTING ▲

Apex of edges on
inside curvature

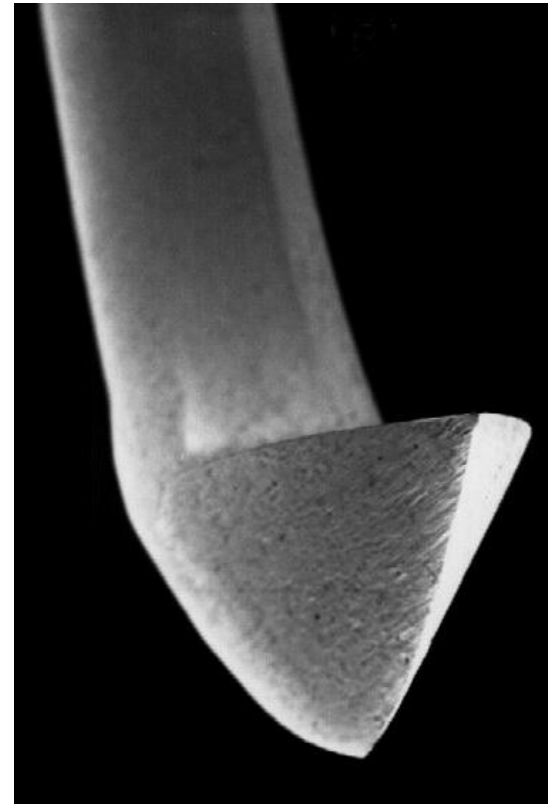


CUTTING NEEDLES

REVERSE
CUTTING



Apex of edges on outside
curvature

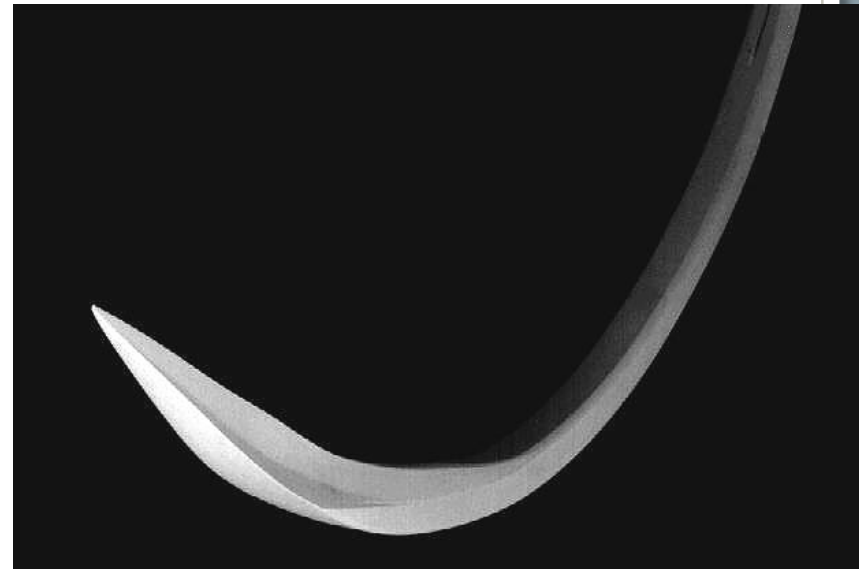


Precision NEEDLES



Premium grade stainless steel

Reverse Cutting



OPHTHALMIC NEEDLES

SPATULATED

Sharp points with side cutting edges

Penetration between layers

